

Exploring LEED for Cities and Communities Through an Expert Lens

Vatsal Bhatt, PhD

Vice President,
LEED for Communities

Ashu Dehadani

Director,
Technical Development

David Abell

Senior Manager,
LEED for Cities & Communities



LEED for Cities and Communities is the leading global rating system and certification program for evaluating the sustainability and quality of life in a city or community.





Existing

Measuring
Performance



Plan & Design

Developing
High-performing
Projects

Cities

Local Governments

Including...

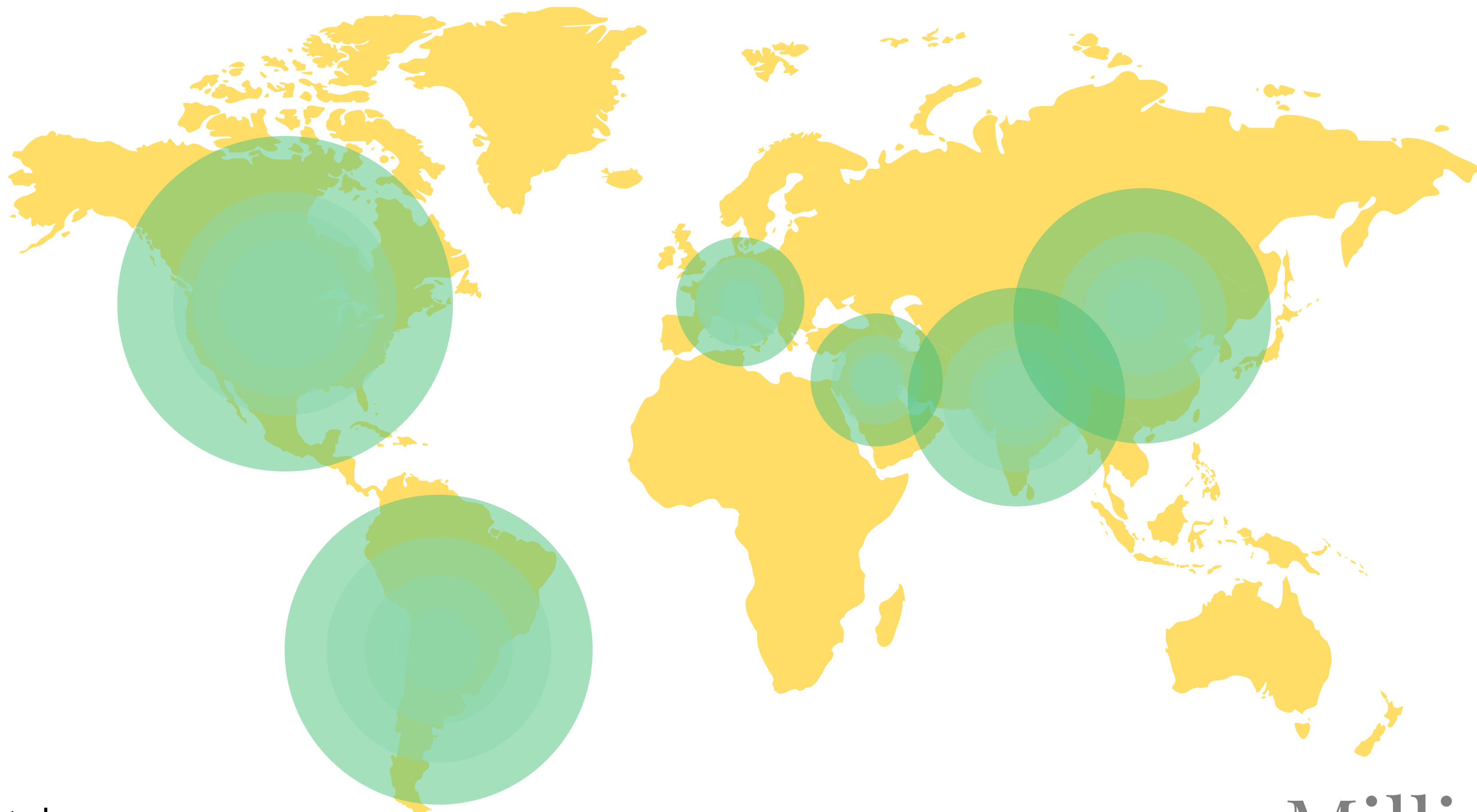
- Counties
- Towns & Villages
- Mega Cities

Communities

Sub-city Geographies

Including...

- Neighborhoods / Boroughs
- Campuses (Academic, Military, Industrial)
- Large-scale developments
- Business districts / economic zones



415⁺ Active Projects

Population impacted : ~ 20 Million

USGBC | GBCI

Evolution: LEED for Cities and Communities

2016

**LEED for Cities and
Communities Pilot**



Evolution: LEED for Cities and Communities

2016

**LEED for Cities and
Communities Pilot**



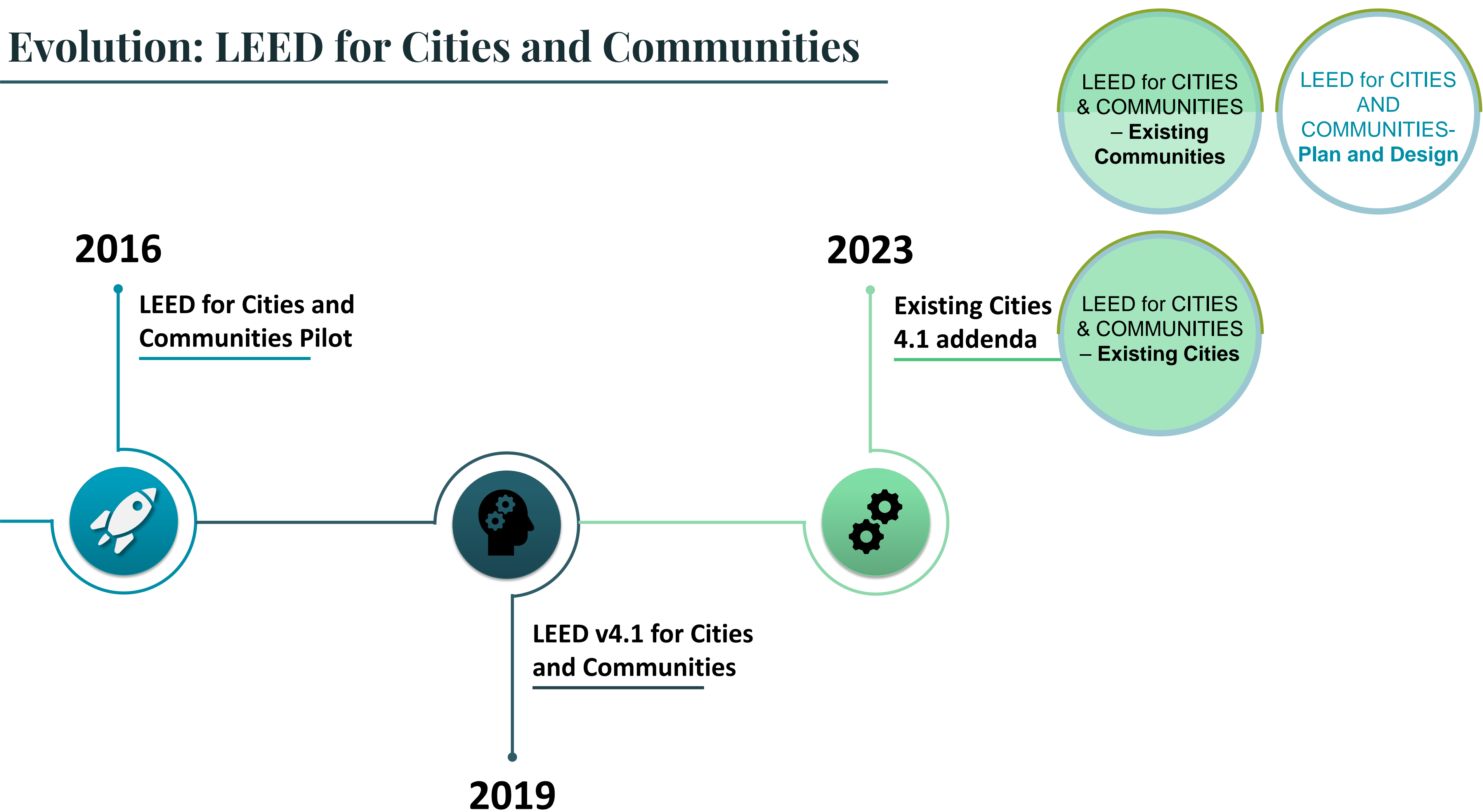
**LEED v4.1 for Cities
and Communities**

2019

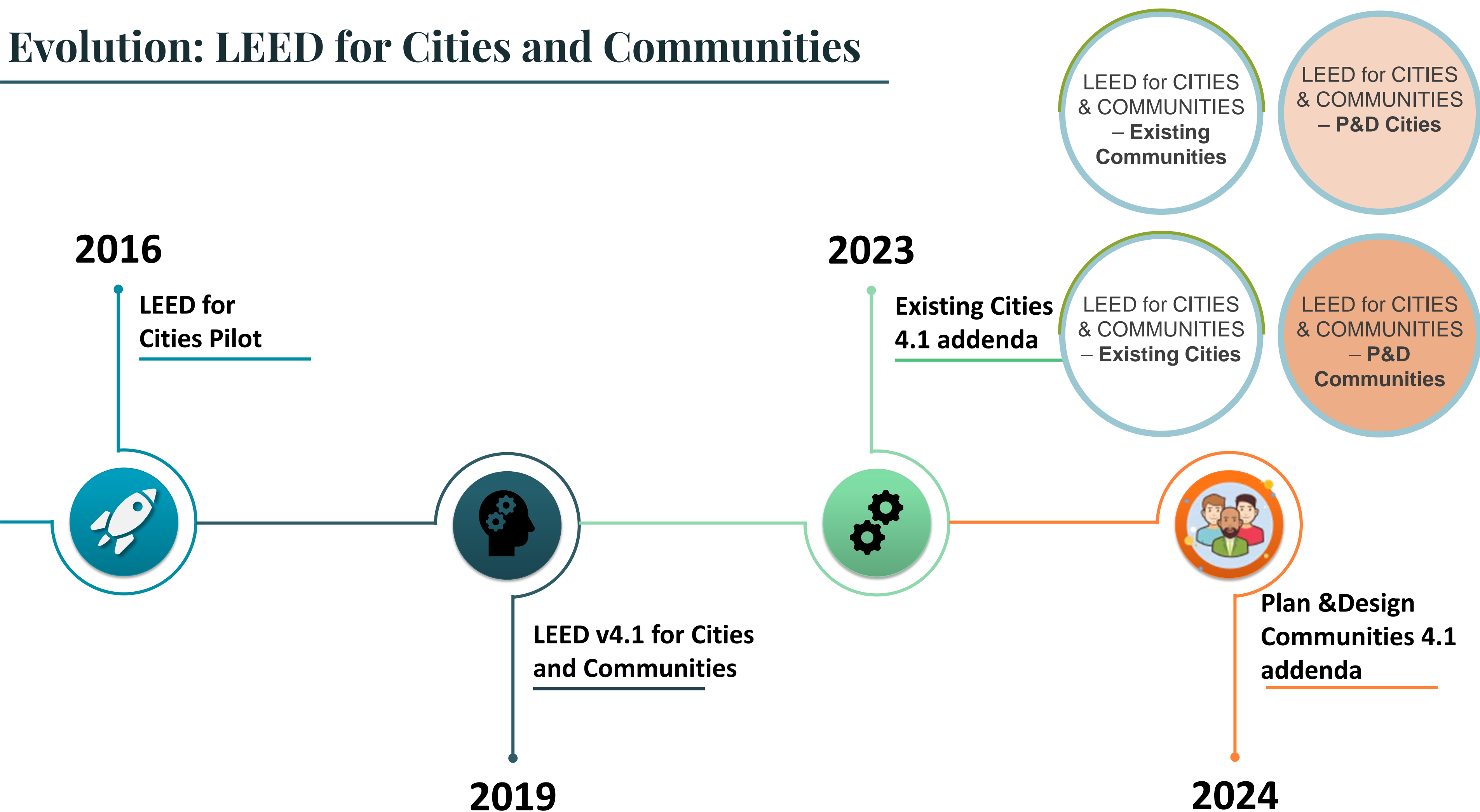
LEED for CITIES
AND
COMMUNITIES -
Existing

LEED for CITIES
AND
COMMUNITIES-
Plan and Design

Evolution: LEED for Cities and Communities



Evolution: LEED for Cities and Communities



Credit Categories: LEED for Cities & Communities



Integrative Process



Natural Systems and Ecology



Transportation and Land Use



Water Efficiency



Energy and Greenhouse Gas Emissions



Materials and Resources



Quality of Life



Innovation



Regional Priority

An aerial photograph of a city skyline, likely Chicago, featuring numerous skyscrapers and a large body of water in the background. A semi-transparent white rectangular box is overlaid on the middle of the image, containing the text 'Who should consider pursuing city or community certification?'.

Cities

Who should consider pursuing city or community certification?

An aerial photograph of a residential neighborhood with several houses, trees, and a street. A semi-transparent white rectangular box is overlaid on the middle of the image, containing the text 'Who should consider pursuing city or community certification?'.

Communities



An aerial photograph of a city skyline, likely Chicago, featuring numerous skyscrapers and a dense urban landscape. A semi-transparent white rectangular box is overlaid on the middle of the image, containing the text 'Cities' and a question.

Cities

How does the Integrated Planning credit enhance value for both cities and communities?

An aerial photograph of a residential neighborhood, showing houses with red roofs, green trees, and a street. A semi-transparent white rectangular box is overlaid on the middle of the image, containing the text 'Communities' and a question.

Communities

How does the Integrated Planning credit enhance value for both cities and communities?

Cities

Are all prerequisites and credits in the rating system quantitative?

Communities

An aerial photograph of a city skyline, likely Chicago, featuring numerous skyscrapers and a body of water in the foreground. A semi-transparent white rectangular box is overlaid on the middle of the image, containing the text 'Cities' and a question.

Cities

How do the rating systems measure equity? How about resilience?

An aerial photograph of a residential neighborhood with several houses, trees, and a street. A semi-transparent white rectangular box is overlaid on the middle of the image, containing the text 'Communities' and a question.

Communities

How do the rating systems measure equity? How about resilience?

Cities

An aerial photograph of Chicago, showing the city skyline with numerous skyscrapers, including the Willis Tower. The city is situated along the Lake Michigan shoreline, with a sandy beach and a large park area visible in the foreground. A multi-lane highway runs parallel to the beach, and a river flows through the city. The sky is blue with scattered white clouds.

What scale of data is required and what are some of the sources where city level data could be found?

An aerial photograph of a residential neighborhood. The houses have red-tiled roofs and are surrounded by green trees. A body of water is visible at the bottom of the frame, with several small boats and docks. The word "Communities" is written in a large, yellow, sans-serif font in the upper right corner.

Communities

Can a new LEED building located in a LFC certified Community get LTc1 points?

An aerial photograph of a coastal neighborhood. The image shows a mix of residential buildings with red-tiled roofs, green trees, and a waterfront area with a marina. The water is a vibrant turquoise color, and several small boats are docked at the piers. The overall scene is bright and sunny, suggesting a warm climate.

Communities

As a community, we are incorporating numerous amenities to improve the experience for both users and residents, but few social services are outside the project boundary. How can we effectively leverage them in the certification process?



Cities

This panel shows a wide-angle aerial view of a city skyline, likely Chicago, with numerous skyscrapers and a dense urban landscape. The word 'Cities' is written in a large, bold, teal font in the upper left corner.



Communities

This panel shows a closer aerial view of a residential neighborhood with houses, trees, and streets. The word 'Communities' is written in a large, bold, yellow font in the upper right corner.

How can we leverage the Innovation and Regional Priority credits effectively?

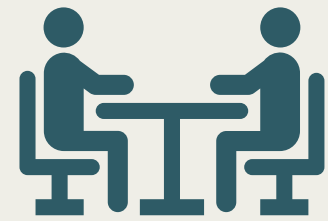


The bottom half of the image is split into two panels. The left panel shows a park area with a large building, trees, and a body of water. The right panel shows a waterfront area with several boats docked at a pier and a body of water.

What next?



Engage with us by visiting the
USGBC Education page



Attending events



Conducting prefeasibility of your
city or community project



Share your thoughts, feedback
with us.

Thank you!

Vatsal Bhatt, PhD
vbhatt@usgbc.org

Ashu Dehadani
adehadani@gbci.org

David Abell
dabell@usgbc.org