



# LEED for Cities and Communities Leadership in Planning webinar October 9, 2019





# What is LEED for Cities and Communities?

LEED for Cities and Communities is the leading global rating system and certification program for evaluating the sustainability and quality of life in a city or community.

It takes a multi-stakeholder approach and serves as a catalyst and transformative tool toward more sustainable, equitable and resilient communities around the world.





Integrative Process



Natural Systems & Ecology



Transportation & Land Use



Water Efficiency



Energy & GHG Emissions



Materials & Resources



Quality of Life



Innovation

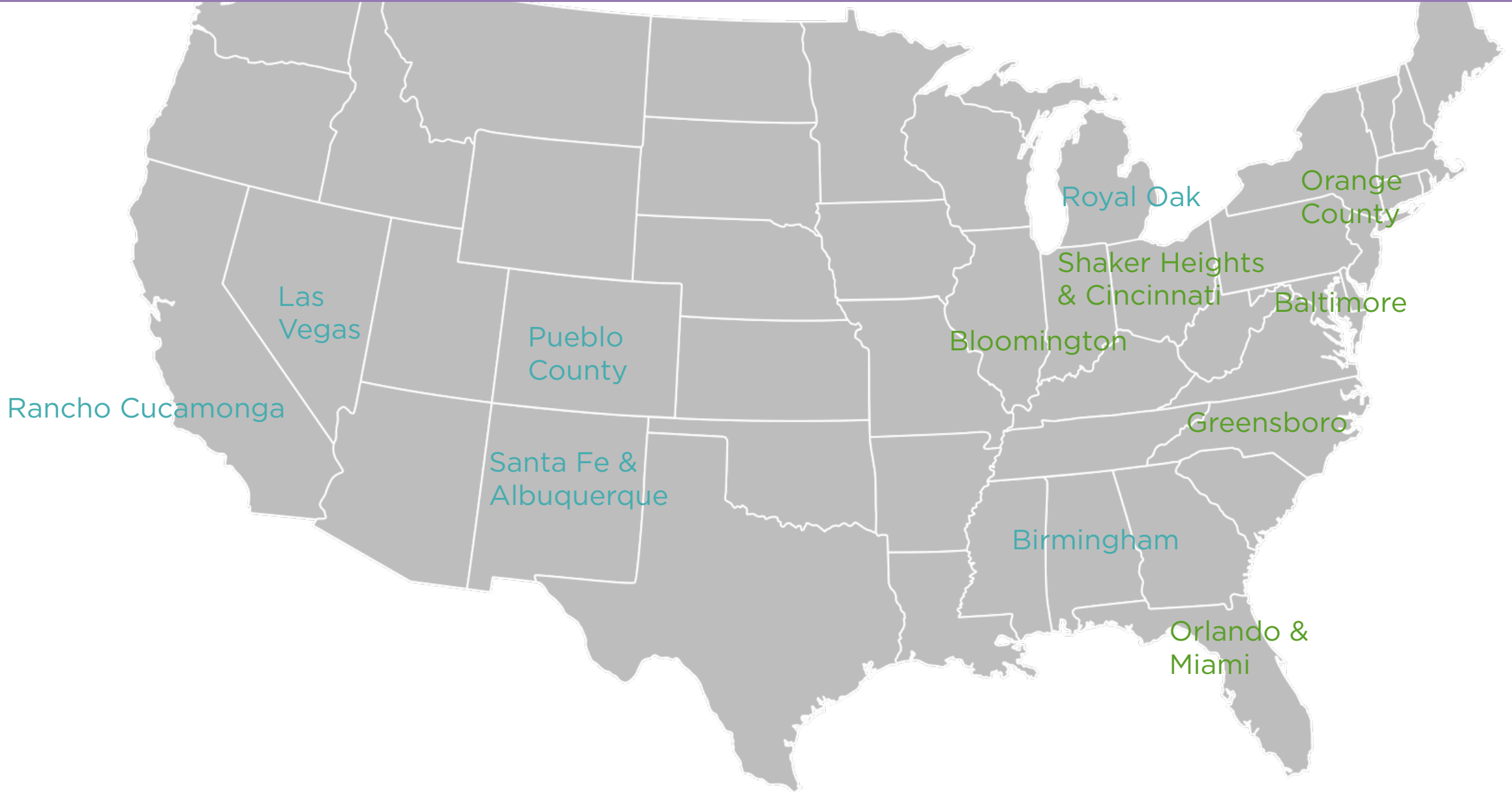


Regional Priority





# 2019 LEED for Cities and Communities Cohort: v4.1





# Cities & Communities Working Group

- Rosanne Albright, City of Phoenix, AZ
- Lucia Athens, City of Austin, TX
- Uwe Brandes, Georgetown University, DC
- Bill Browning, Terrapin Bright Green, DC
- Cliff Cook, City of Cambridge, MA
- Maia Davis, Metro Washington COG, DC
- Jill Horwitz, County of Broward, FL
- Laura Jackson, US EPA, NC
- Karen Klepack, Southern California Edison, CA
- Aurore Larson, Bechtel Corporation, VA
- Johanna Leonard, City of Evanston, IL
- Dongjing Lu, Beijing Bldg Technology Dev Co, China
- Jasmin Moore, City of Lawrence, KS
- Lili Pan, Trend, China
- Olimpia Pantelimon, Government of Alberta, Canada
- Piero Pelizzaro, Milan Municipality, Italy
- Sumedha Rao, Entegriety, India
- Chris Rhie, Buro Happold, CA
- Peter Stair, KEO International, Canada
- Emma Thomas, LendLease, CA
- Jerry Tinianow, City/County of Denver, CO
- Joel Ann Todd, Joel Ann Todd Consulting, MD
- Dalmo Vieira Filho, Petinelli, Brazil
- Walker Wells, Raimi + Associates, CA
- Yinying Zhou, SOM Shanghai, China





# Webinar Moderator and Panelists



Petra Hurtado  
Research Director  
American Planning Assoc.  
phurtado@planning.org



Amy Gilder-Busatti  
Environmental Planner  
City of Baltimore, MD  
amy.gilder-  
busatti@baltimorecity.gov

Marco Velotta  
Senior Management  
Analyst  
City of Las Vegas, NV  
mvelotta@lasvegasnevada.gov



Kristen Torres Pawling  
Sustainability Program  
Director  
Los Angeles County, CA  
kpawling@ceo.lacounty.gov







Milwaukee RiverWalk, Great Public Space

# American Planning Association

*Creating great communities for all*

APA advances planning through leadership in education, research, advocacy, and ethical practice



American Planning Association  
*Creating Great Communities for All*





- 45,000 members from 100+ countries
- 47 chapters throughout the United States
- 21 divisions that embrace the wide range of planning
- Two office locations: Chicago and Washington, D.C.





## LEGISLATIVE PRIORITIES

# Planning for Opportunity

A legislative agenda to create just, healthy and prosperous communities that expand opportunity for all

1

**Housing choice  
and affordability**



2

**Inclusive Growth  
and Development**



3

**Infrastructure**



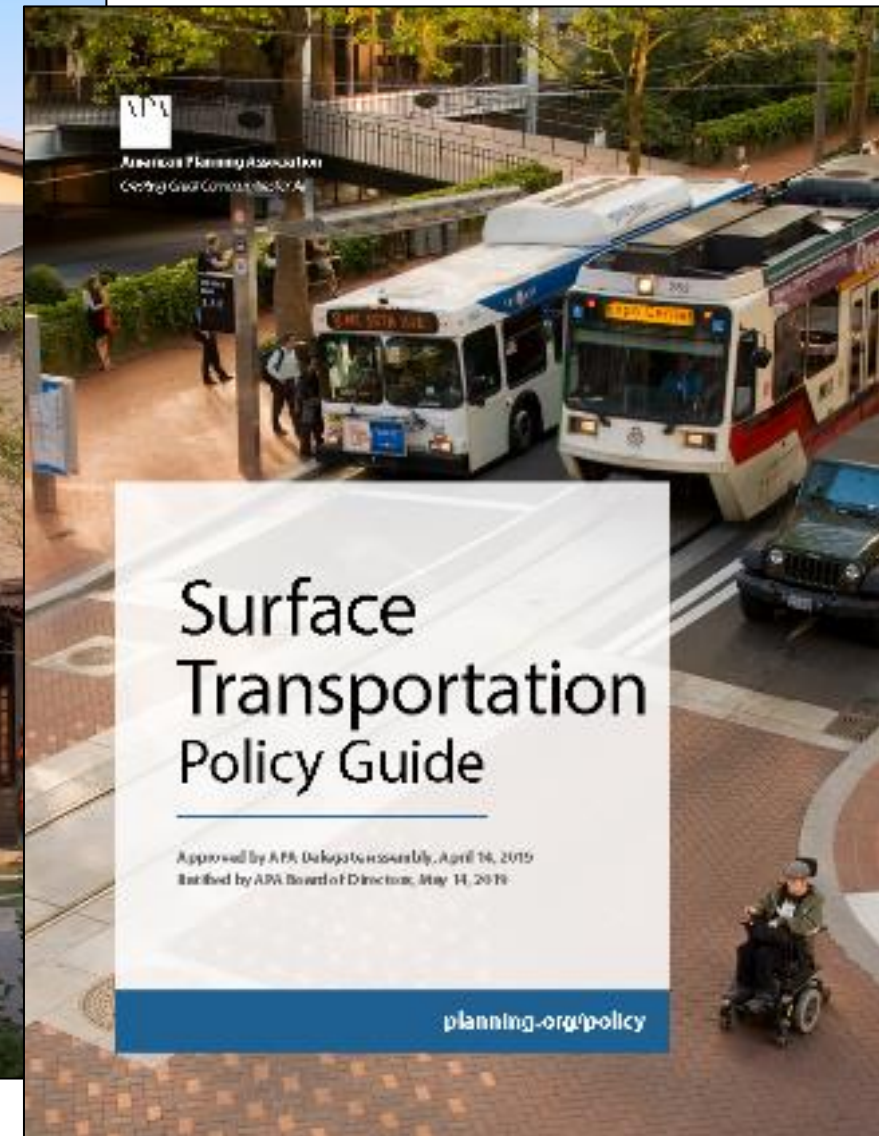
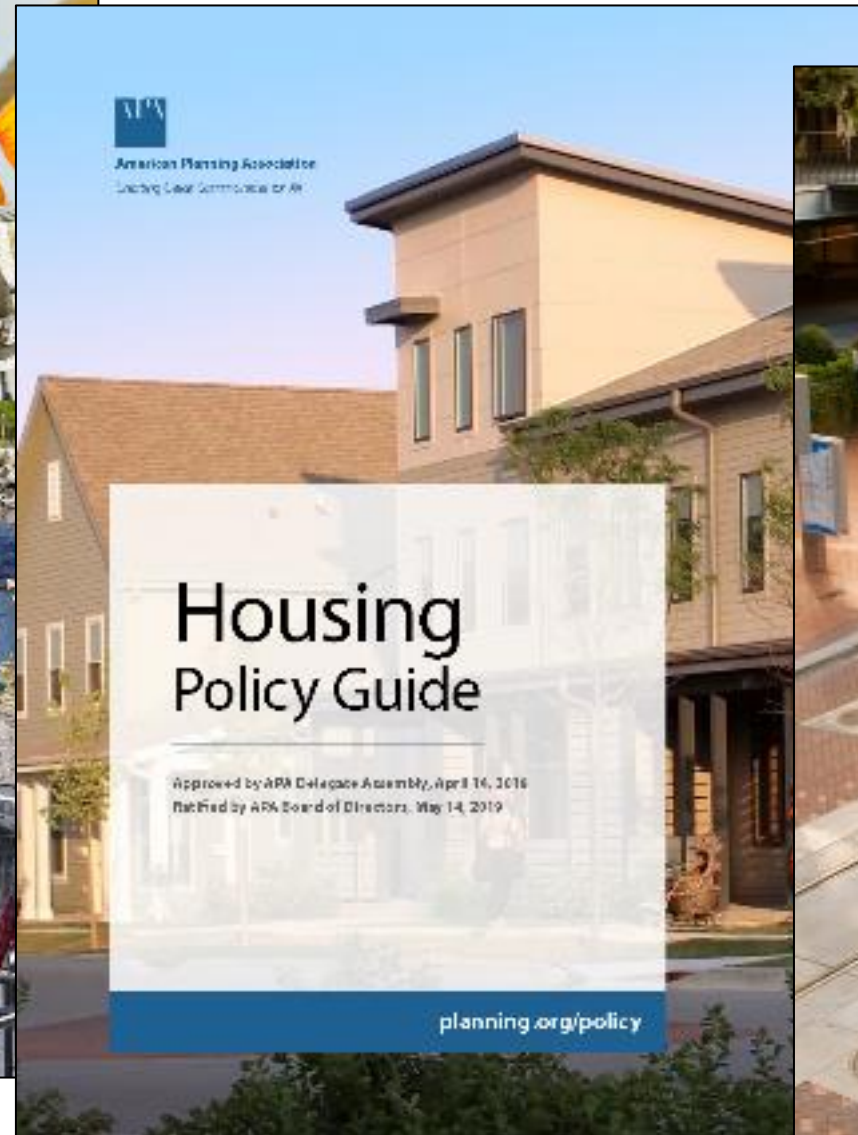
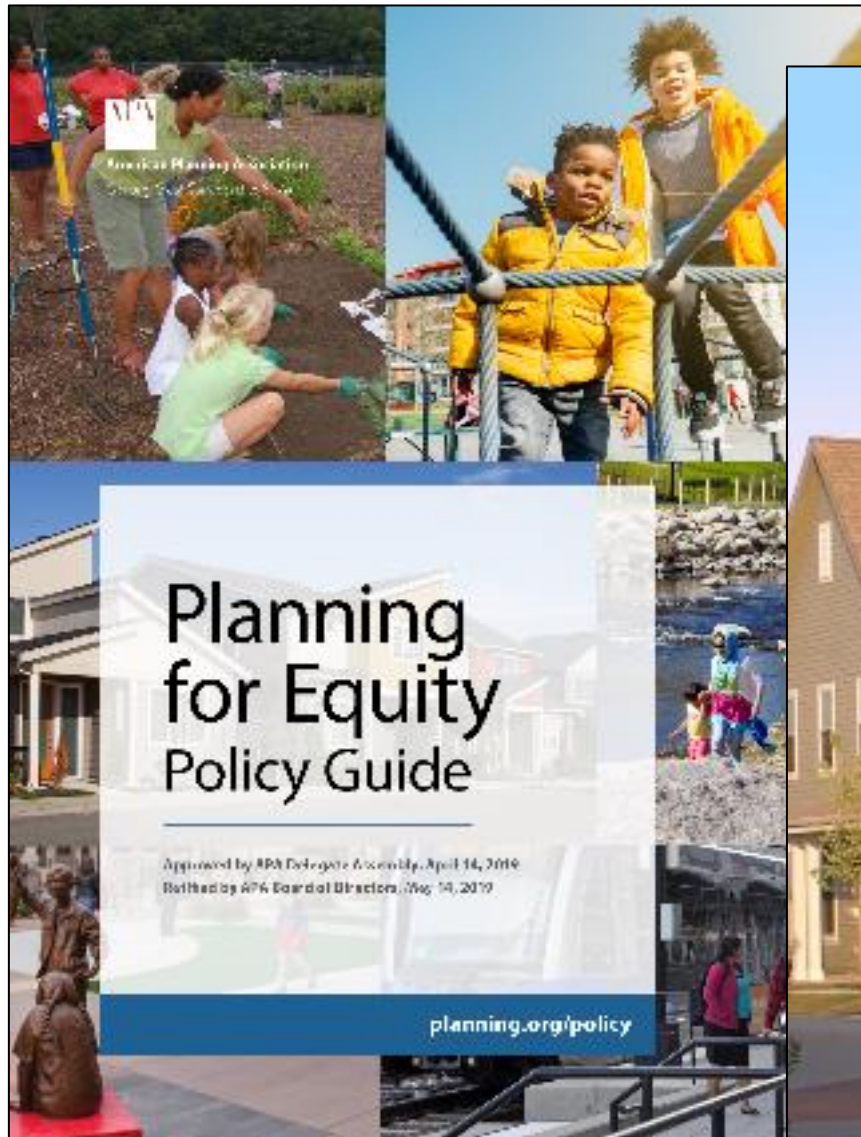
4

**Healthy and  
Safe Communities**



Share these priorities with your elected officials at  
**[planning.org/policy](https://planning.org/policy)**









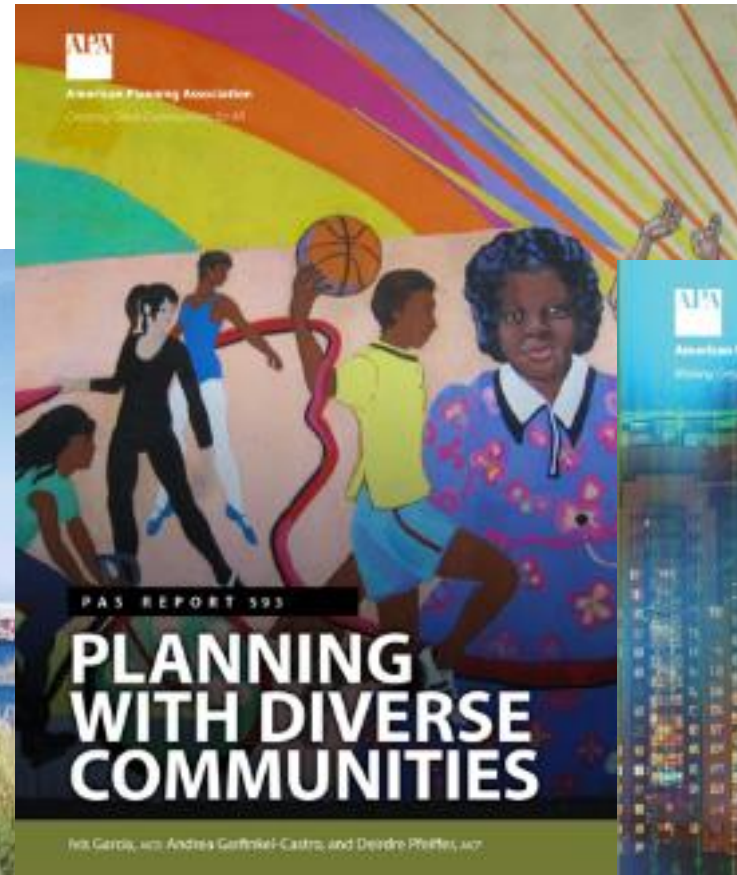




**The American Institute of Certified Planners** is APA's professional institute and provides the **only nationwide, independent verification of planners' qualifications**. Certified planners pledge to uphold high standards of practice, ethics, and professional conduct, and to keep their skills sharp and up to date by continuously pursuing advanced professional education.



# Envisioning Tomorrow – Preparing Planners for an uncertain future





# Envisioning Tomorrow – Preparing Planners for an uncertain future

## APA Foresight

- Technologies are changing the way we as planners do our work
- Technologies are changing the communities and the built environment we make plans for





Neponset River Greenway, Boston, Massachusetts



Short North Arts District – Columbus, Ohio



Gathering Place – Tulsa, Oklahoma



Discovery Green - Houston, Texas



# 2019 BALTIMORE SUSTAINABILITY PLAN

BALTIMORE CITY DEPARTMENT OF PLANNING

October 2019





## The 2009 Baltimore Sustainability Plan

## The Baltimore Sustainability Plan | 2009



## Climate Action Plan (CAP) | 2012



## Disaster Preparedness Project and Plan (DP3)



## Homegrown Baltimore (HGB) | 2013



## Baltimore Green Network (BGN) | 2018

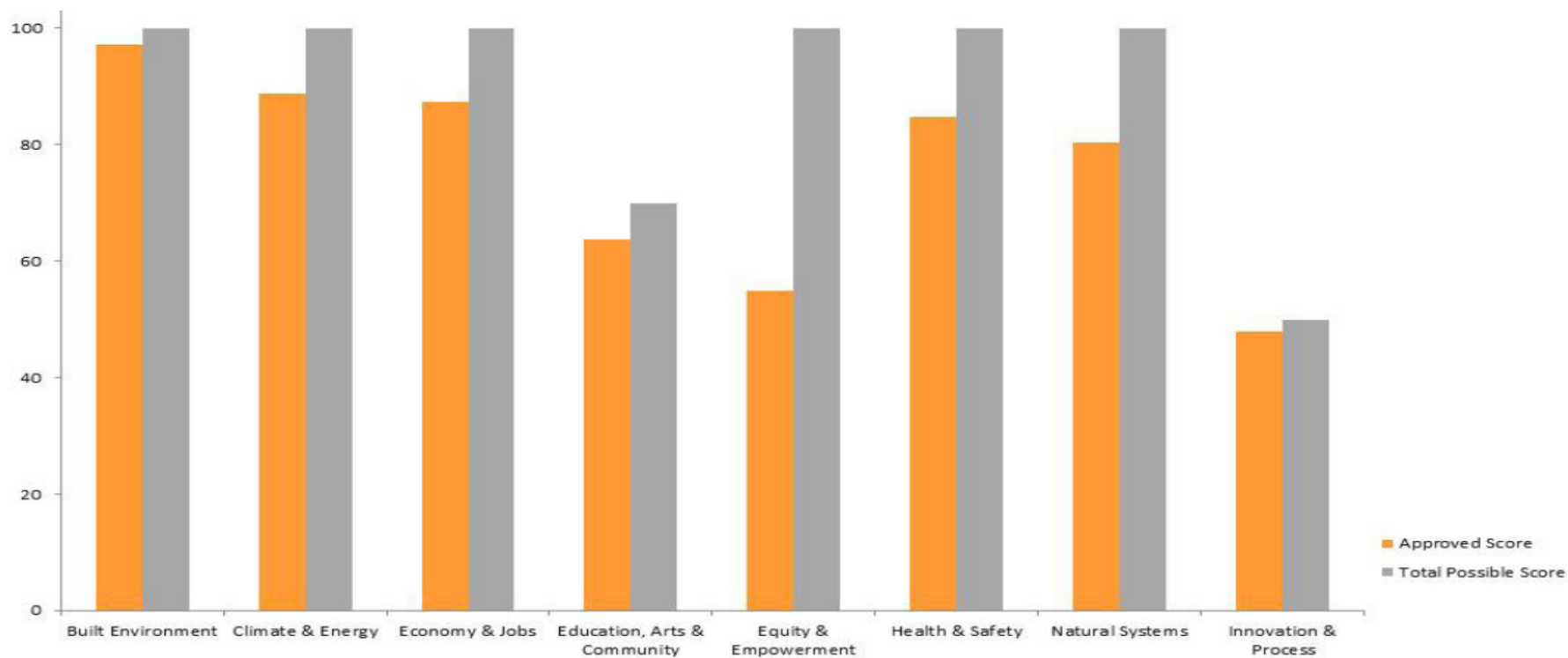




## 5-STAR Community Rating (2015)



### City of Baltimore STAR Points by Goal Area






## 2.5 years

- 21 Sustainability Commissioners
- 125 Sustainability Ambassadors
- 1,200 Resident surveys
- 501 Subject Matter Experts
- 12 Working Groups
- 100's Comments at meetings
- 1,025 Comments on website





# Sustainability Plan Framework

Community	Human-Made Systems	Climate and Resilience	Nature in the City	Economy
Neighbors	Neighborhoods	Community Preparedness	People and Nature	Local Economy
Environmental Literacy	Housing Affordability	Energy	Nature for Nature's Sake	Workforce Development
Healthy School Environments	Buildings	Greenhouse Gas Emissions	Trees and Forests	Arts and Culture
Waste and Recycling	Transportation	Clean Air	Water in the Environment	
Urban Agriculture	Noise	Food Systems	Green Infrastructure	





# THE GLOBAL GOALS

For Sustainable Development



By 2030, eradicate extreme poverty for all people everywhere



End hunger, achieve food security and improved nutrition & promote sustainable agriculture



Ensure healthy lives and promote well-being for all at all ages



Ensure inclusive and quality education for all and promote lifelong learning



Achieve gender equality and empower all women and girls



Ensure access to water and sanitation for all



Ensure access to affordable, reliable, sustainable and modern energy for all



Promote inclusive and sustainable economic growth, employment and decent work for all



Build resilient infrastructure, promote sustainable industrialization and foster innovation



Reduce inequality within and among countries



Make cities inclusive, safe, resilient and sustainable



Ensure sustainable consumption and production patterns



Take urgent action to combat climate change and its impacts



Conserve and sustainably use the oceans, seas and marine resources



Sustainably manage forests, combat desertification, halt and reverse land degradation, halt biodiversity loss



Promote just, peaceful and inclusive societies



Revitalize the global partnership for sustainable development

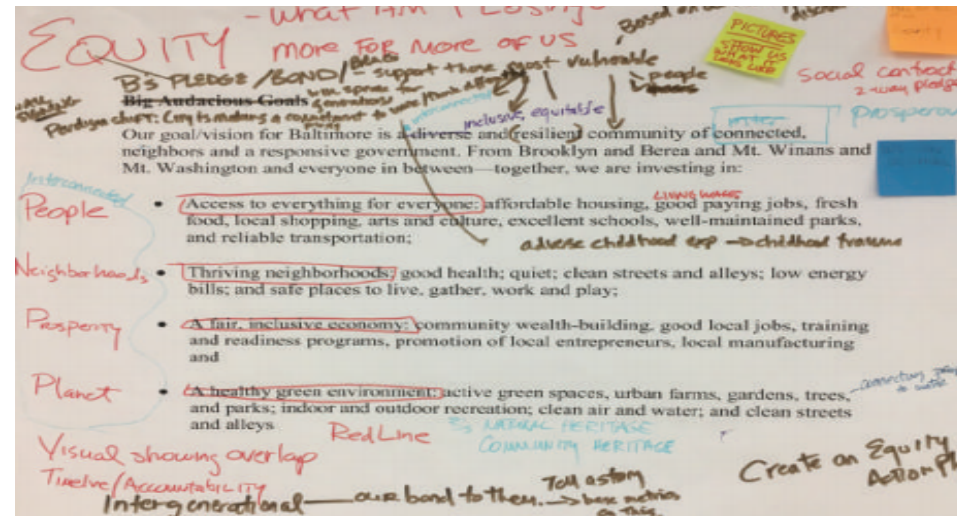


## Equity Lens

Our mission is to improve the quality of human life while balancing the need for environmental protection, societal progress, and economic growth.

We cannot meaningfully work for sustainability without deliberately addressing enduring social, economic, and environmental disadvantages that people experience based on their race, ethnicity, and class.

A targeted universal strategy is one that is inclusive of the needs of both the dominant and the marginal groups but pays particular attention to the situation of the marginal group.





## Big Audacious Commitments

1

### *A Commitment to be Transparent*

**We will be honest about our past.**

**We recognize our interconnectedness.**

**We will share power.**

2

### *A Commitment to Collaborate*

**We commit to thinking and working differently.**

**We commit to working together.**

**We seek to solve multiple problems at once.**

**We support change at the local level.**

3

### *A Commitment to be Accountable*

**We actively seek feedback & engagement.**

**We will ask: How are we doing?**

**We will humanize our data.**

**We will speak in terms that are understandable to all.**

**We will care for the natural world.**



- Accountability
  - Annual Reporting
  - Annual Open House
  - Periodic Updates





# CITY OF LAS VEGAS 2050 MASTER PLAN

SUMMER 2019



SMITHGROUP



# BUILDING ON ACCOMPLISHMENTS

- 2020 Master Plan at end of life-cycle
- Changes between 2000 & 2019
  - Population growth: 485,000 to 650,000
  - Demographic, socio-economic, and land use
  - Need for new infrastructure and services
  - Economic challenges from Great Recession
- Recently completed plans & resolutions
- Integration of various City efforts
  - STAR Communities
  - LEED for Cities
- Projected population growth by 2050:
  - 850,000 within the City
  - 3 million within the region





# THE LAS VEGAS 2050 PLAN WILL

- Develop a **clear vision** or framework for the future of Las Vegas
- Provide **strong direction** and practical guidelines **for future development**
- Provide **recommendations that are implementation-focused**, relevant, clear, and adaptable to change
- Include **public involvement** that is inclusive and transparent and is **broadly-supported** by community consensus





# WHAT WE'VE HEARD: TOP CHALLENGES






# THE DRAFT VISION

## LAS VEGAS 2050 MASTER PLAN

### Las Vegas in 2050 will be...

- Bold
  - Innovative
  - Iconic
  - Working
  - Smart
  - Accessible
  - Collaborative
- 



THE CITY OF LAS VEGAS WILL BE  
THE LEADER IN RESILIENT,  
SUSTAINABLE CITIES -  
LEVERAGING THE PIONEERING  
INNOVATIVE SPIRIT OF ITS  
RESIDENTS TO PROVIDE  
EQUITABLE ACCESS TO SERVICES  
AND JOBS IN THE NEW ECONOMY.

# GUIDING PRINCIPLES

## THE FOUNDATION OF STRATEGIES

- Measure success
- Weigh recommendations
- Foster community-driven implementation
- Improve quality of life for all residents



### EQUITABLE

inclusive, fair, welcoming



### RESILIENT

sustainable, adaptable, flexible



### HEALTHY

strong, accessible, well



### LIVABLE

unique, complete, enjoyable



### INNOVATIVE

smart, diverse, bold



# LAND USE

**WE ADAPT LAND TO MEET COMMUNITY GOALS VIA LAND USE. LAND USE DEFINES WHAT CAN BE BUILT ON A PARCEL, AND ALSO AFFECTS OUR CHOICES OF WHERE WE LIVE, WHERE WE WORK, AND HOW WE TRAVEL AROUND THE CITY.**

**LU-1** Develop compact and mixed-use neighborhoods with walkable access to jobs, amenities, education, services, and transit.

**LU-2** Utilize new development models that provide a broad mix of housing and neighborhood types to accommodate residents with varied incomes and in different stages of life.

**LU-3** Focus new development in infill and redevelopment areas.

**LU-4** Preserve and reuse historically significant structures and sites.

**LU-5** Improve the quality of districts and neighborhoods to promote an authentic, vibrant sense of place.

# OPEN SPACE AND RECREATION

**OPEN SPACE AND RECREATIONAL FACILITIES PROVIDE HEALTHY AND ENVIRONMENTAL BENEFITS FOR QUALITY OF LIFE IN THE CITY.**

**OPEN SPACES CAN INCREASE SENSE OF PRIDE, BRING NEW BUSINESS AND ENCOURAGE BETTER STEWARDSHIP.**

**OS-1** Protect, enhance, and restore natural features and resources of the Mojave Desert.

**OS-2** Improve access and connectivity of open spaces for ecological, social, health, and quality of life benefits.

**OS-3** Enact stronger water conservation strategies to focus and minimize consumptive water use.

**OS-4** Develop new park and open space typologies for new and existing developments to meet the unique needs of residents.

**OS-5** Prioritize increasing tree canopy across all areas of the city for multiple public health and environmental benefits.

**OS-6** Strengthen cultural and recreation opportunities for residents and visitors across the city.



# ECONOMY AND EDUCATION

**WE NEED MORE DIVERSE WELL-PAYING JOBS AND HIGHER QUALITY PUBLIC EDUCATION FOR CITY OF LAS VEGAS.**

**THESE ASPECTS SUPPORT OUR COMMUNITY WITH MORE OPTIONS FOR CITIZENS, AND CULTIVATE AND ATTRACT A MORE TALENTED WORKFORCE.**

**EE-1** Achieve equitable attainment of quality K-12 and higher education to support a strong workforce and quality of life.

**EE-2** Support school siting and learning environments for all ages through thoughtful land use and transportation planning.

**EE-3** Support diverse employment and entrepreneurship opportunities that capitalize on existing workforce, skills, and culture, especially in emerging sectors.

**EE-4** Maximize city services, emerging technologies and quality of life indicators to recruit new businesses.

**EE-5** Lead regional economic development through collaborative partnerships between state/local governments, education institutions, private sectors and philanthropic organizations in a way that results in equitable benefits.

**EE-6** Increase affordable housing types and choices for all income levels near existing and new employment centers.

# TRANSPORTATION AND INFRASTRUCTURE

**COMMUNITY INPUT SUGGESTS SUPPORT FOR MORE PUBLIC TRANSIT. TRANSIT SYSTEMS DEPEND ON THE KINDS OF LAND USE AND DEVELOPMENT THAT ALLOW PEOPLE TO ACCESS TRANSIT CONNECTIONS BETWEEN THEIR HOMES, JOBS AND SERVICES – EASILY AND SAFELY.**

**WE NEED TO MAXIMIZE THE USE OF OUR LIMITED WATER SUPPLY – AND REDUCE CONSUMPTION.**

**TI-1** Support efficient water management, reduce water consumption and encourage a move towards a net zero water city.

**TI-2** Prevent erosion, minimize flooding risks, and recharge groundwater.

**TI-3** Prioritize the use of renewable energy sources.

**TI-4** Connect and enhance accessible bike and pedestrian facilities as part of a safe, efficient road network that supports all transportation modes throughout the City.

**TI-5** Increase transportation choice and make transit options more convenient and better integrated with vibrant neighborhood and employment centers, better connecting people to their destinations.

**TI-6** Strengthen smart transportation systems and management.



# SERVICES AND FACILITIES

THE AVAILABILITY OF SERVICES AND FACILITIES DIRECTLY AFFECTS THE SAFETY, QUALITY OF LIFE, AND ECONOMIC STABILITY OF LAS VEGAS.

PLANNING FOR THESE IMPORTANT COMMUNITY ASSETS IS AN ESSENTIAL FOUNDATION FOR THE MASTER PLAN.

**SF-1** Provide equitable access to facilities and services that help meet residents' social needs, maximize their potential for development, and enhance community well-being.

**SF-2** Reduce crime and create safe, walkable, transit-friendly communities that elevate social equity.

**SF-3** Prioritize the needs of the most vulnerable members of the community.

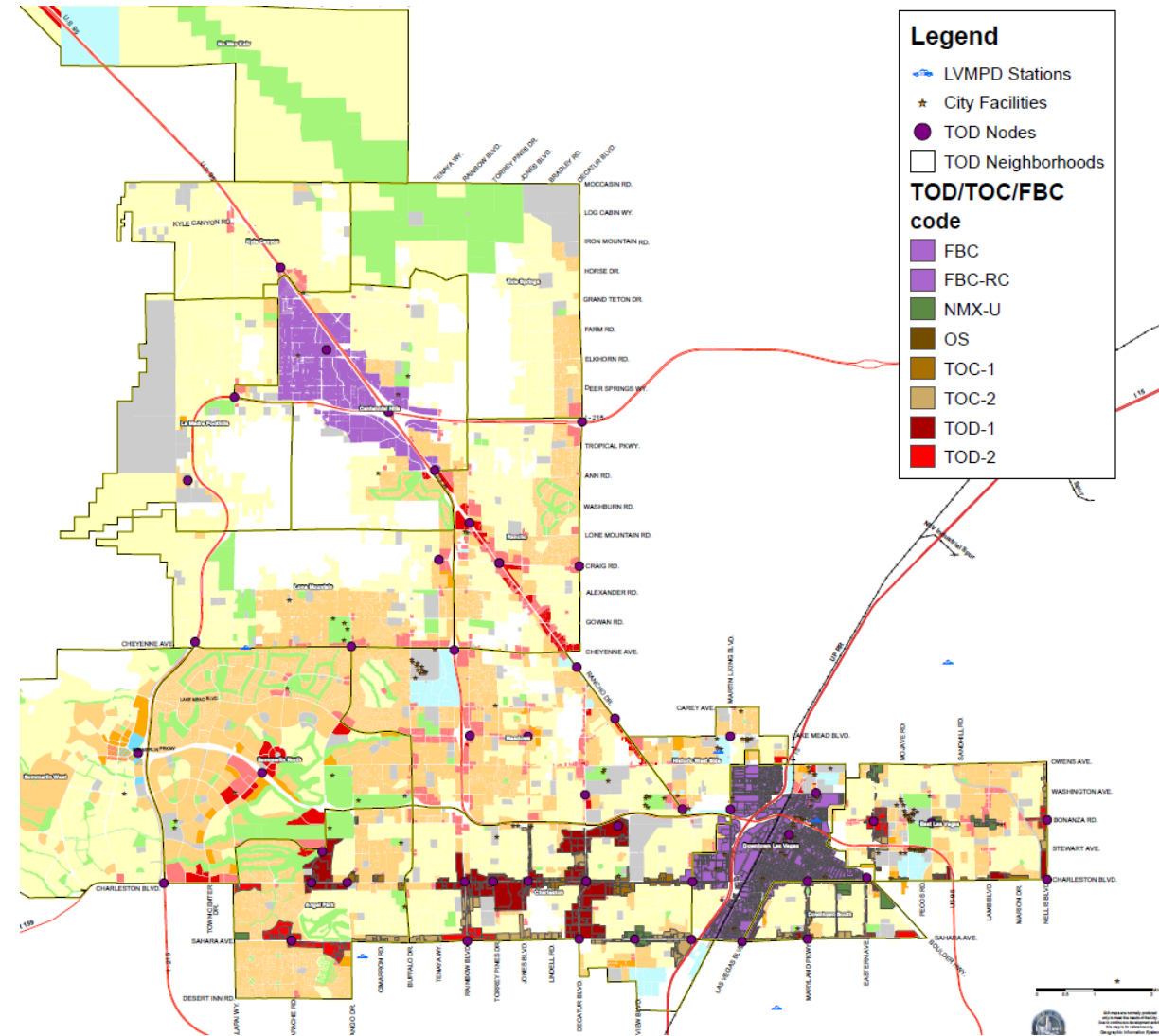
**SF-4** Reduce waste consumption and target net-zero material waste produced in the community.

**SF-5** Proactively prepare for climate change risks, natural and man-made hazards, and extreme events.

**SF-6** Create sufficient capacity and capability to implement collaborative and proactive strategies across local agencies.

# MASTER PLAN DRAFTING

- Develop alignment with mixed-use **TOD focused districts**, regional centers, and multi-modal corridors that align with a regional transit plan.
- **Explore relationships** between infill, redevelopment, infrastructure, CLV/public service provision, affordable housing, and water efficiency (with the region's water authority, SNWA).
- Prepare a **comprehensive master plan** covering land use and development, parks and open space, public facilities, conservation, transportation, education and economy, housing, safety, historic preservation, and urban agriculture that is a framework for the future.
- Set **implementation actions (Aligned with LEED for Cities)** to measure progress, and meet objectives.



## CONCEPTUAL GENERAL PLAN MAP



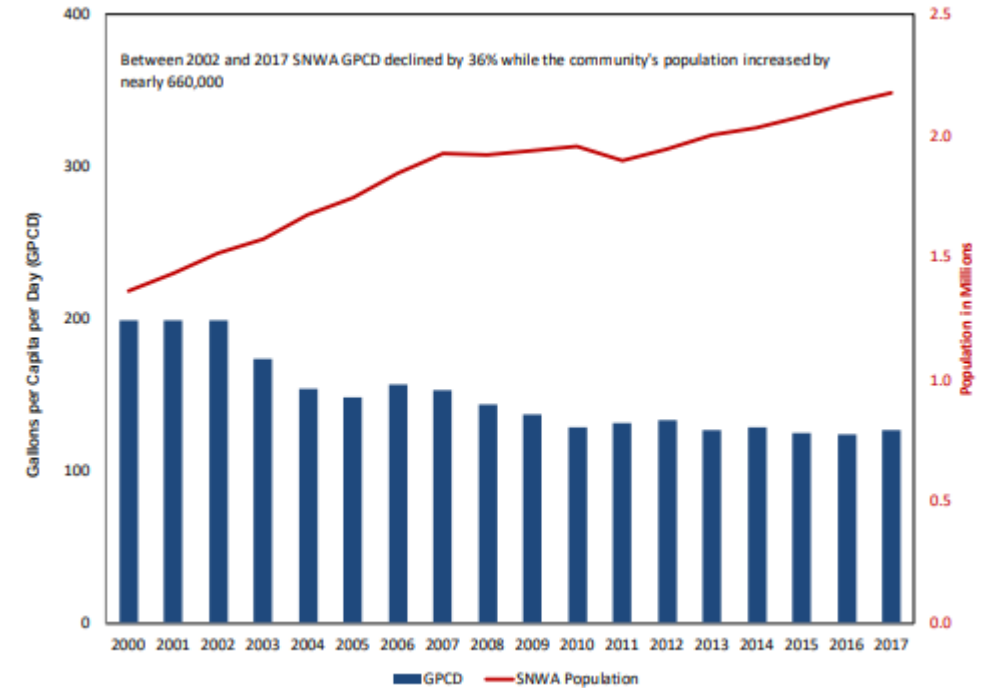
# LEED FOR CITIES CONNECTIONS

- General alignment between LEED prerequisites/credits and desired goal outcomes
- Allows City (and community at large) measurable ways to improve over a thirty year horizon and makes case for change
  - Natural Systems (NS)
    - Some underserved areas need accessible parks; green space required citywide reduce impacts of extreme heat and UHI
  - Transportation (TR)
    - Alignment of TOD and transit plan to reduce VMT, improve jobs-housing balance, and increase mixed-use development
  - Energy & GHG Emissions (EN)
    - Transition to renewable energy sources underway due to City efforts and state RPS legislation
  - Materials & Resources (MR)
    - Increased recycling rates with MRF, but rates have plateaued.
  - Quality of Life (QL)
    - Education, equity, and affordability metrics in need of improvement through increased investment in City programs and services



# LEED FOR CITIES CONNECTIONS

- TI-1: Support Efficient Water Management and reduce water consumption
  - Align with SNWA goals and policies – correlation with Water Performance score
    - Current: 127 GPCD
    - Targets: 116 GPCD by 2035 & < 100 GPCD by 2050
  - WE Prerequisite: Water Access and Quality
    - Water & Sanitation access
      - 100% coverage
    - LVVWD Water Quality meets standards
    - Treated Wastewater and Stormwater Quality
      - Meets CWA and NPDES standards
  - WE Credit: Integrated Water Management
    - Water availability assessment, demand, and supply
      - (2% share of Colorado River – 300,000 acre-feet extended by reuse)





# NEXT STEPS

WWW.MASTERPLAN.VEGAS

- First Draft by end of 2019
- Complete LEED for Cities submission
- Anticipated Master Plan adoption by early 2020







OurCounty

# Countywide Sustainability Plan

LEED for Cities Webinar



# Background

# County of Los Angeles



- Inhabited for more than 10,000 years, most of that time the land of the Chumash, Tongva, and Tataviam tribes
- 1 out of 4 Californians and 1 in 33 Americans lives in Los Angeles County
- 200+ languages spoken
- 75 miles of coastline
- At 4,084 square miles, the county is roughly the size of Hawaii's Big Island and larger than several U.S. states



# The County's Aims & Roles

## The plan is:

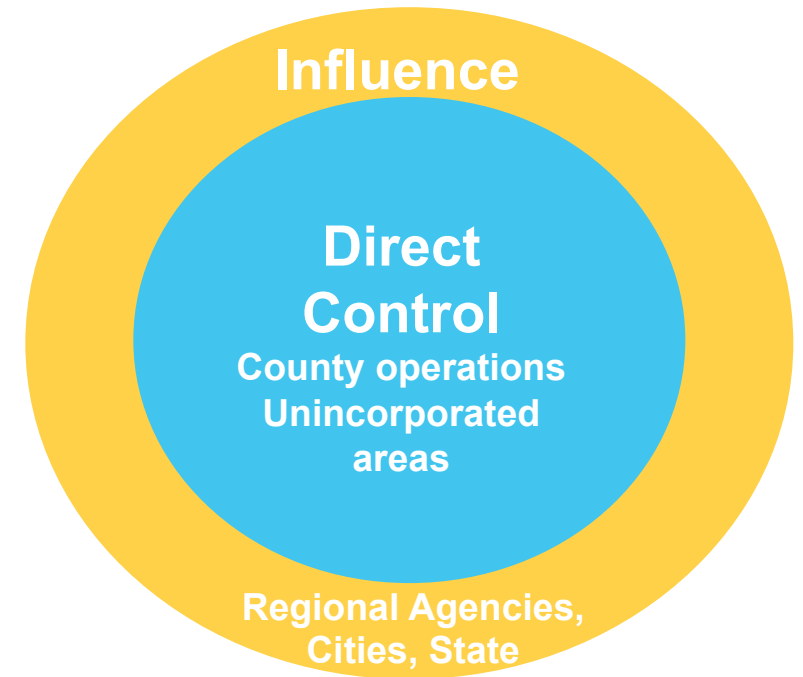
- Aspirational, Comprehensive, Long-Term, Regional, Actionable

## Plan is analogous to a strategic plan

- Sets out a vision and strategy, but does not include a detailed implementation strategy

## Plan mostly addresses areas of County's control

- Does include some areas where we can influence others (Metro, South Coast AQMD, etc.)



# Development Process



# Comprehensive Review



Framework	Scale
UN Sustainable Development Goals	International
Sustainability Tools for Assessing and Rating (STAR) Communities	National
Los Angeles Regional Climate Collaborative (LARC) – A Greater LA	Regional
<b>Buncombe County, NC</b> <i>Sustainability Plan</i> <b>Orange County, FL</b> <i>Sustainability Plan</i> <b>Boulder County, CO</b> <i>Environmental Sustainability Plan</i>	County
<ul style="list-style-type: none"> <li>• Copenhagen</li> <li>• Denver</li> <li>• Fort Lauderdale</li> <li>• Los Angeles</li> <li>• Greater Memphis Area</li> <li>• New York City</li> <li>• Singapore</li> <li>• Philadelphia</li> <li>• Portland, OR</li> <li>• Santa Monica</li> <li>• Toronto</li> <li>• Uruguay</li> <li>• D.C.</li> <li>• Paris</li> </ul>	City



This is the  
LEED-type  
rating system  
for  
community  
sustainability

## STAR Framework of Sustainability Goals & Objectives

Built Environment	Climate & Energy	Economy & Jobs	Education, Arts & Community	Equity & Empowerment	Health & Safety	Natural Systems	Innovation & Process
Ambient Noise & Light	Climate Adaptation	Business Retention & Development	Arts & Culture	Civic Engagement	Active Living	Green Infrastructure	Best Practices & Processes
Community Water Systems	Greenhouse Gas Mitigation	Green Market Development	Community Cohesion	Civil & Human Rights	Community Health	Biodiversity & Invasive Species	Exemplary Performance
Compact & Complete Communities	Greening the Energy Supply	Local Economy	Educational Opportunity & Attainment	Environmental Justice	Emergency Management & Response	Natural Resource Protection	Local Innovation
Housing Affordability	Energy Efficiency	Quality Jobs & Living Wages	Historic Preservation	Equitable Services & Access	Food Access & Nutrition	Outdoor Air Quality	Good Governance
Infill & Redevelopment	Water Efficiency	Targeted Industry Development	Social & Cultural Diversity	Human Services	Health Systems	Water in the Environment	
Public Parkland	Local Government GHG & Resource Footprint	Workforce Readiness	Aging in the Community	Poverty Prevention & Alleviation	Hazard Mitigation	Working Lands	
Transportation Choices	Waste Minimization				Safe Communities		



# Coverage Analysis

Determine the degree to which framework criteria are currently addressed by the County and its role

1		Supervisor	CEO	CSO	HR	Public Works (DBS)	Flood Control District	Regional Planning	Parks and Rec	Library	Beaches and Harbors
2	<b>STAR</b>										
3	<b>Built Environment</b>										
4	BE-1: Ambient Noise & Light					S		P			
5	BE-2: Community Water Systems					P			S		
6	BE-3: Compact & Complete Communities					S		P			
7	BE-4: Housing Affordability		S					S			
8	BE-5: Infill & Redevelopment					S		P			
9	BE-6: Public Parkland							S	P		
10	BE-7: Transportation Choices					S		S			
11	<b>Climate &amp; Energy</b>										
12	CE-1: Climate Adaptation			N		N	N	I			
13	CE-2: Greenhouse Gas Mitigation			S		S		P	S		
14	CE-3: Greening the Energy Supply			I		S					
15	CE-4: Energy Efficiency										
16	CE-5: Water Efficiency			S		I			S		

## NOTATION:

- A plan in place (**P**)
- A plan in progress (**I**)
- A plan is needed (**N**)
- If the department or agency is in a supporting role (**S**)

# STAR Communities Coverage Summary



## **COVERED**

Environmental

Compliance

Land Use

Public Health

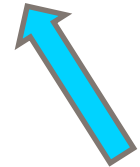
The Arts

## **COVERAGE OPPORTUNITIES**

Education

Workforce Development

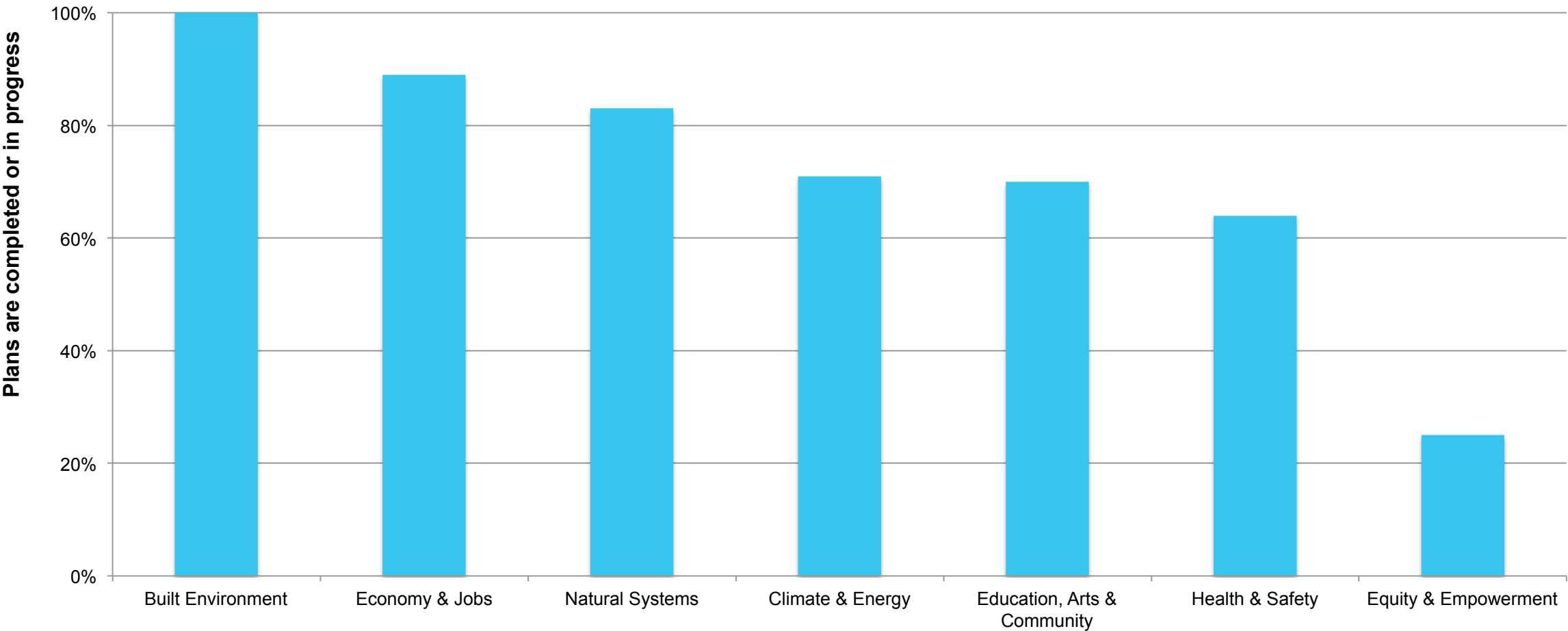
Equity



Ability to leverage unique  
partnerships (ex. LAEDC)



Existing Efforts by County Departments and/or Regional Entities



# What's in the plan?



# Public Engagement

From Fall 2017 to Summer 2019:

- More than 200 meetings and presentations to business groups, community and nonprofit organizations, cities and other public entities, academics, etc.
  - 11 half-day+ workshops attended by 600 people from 350 organizations.
  - 2 Cities Summits to discuss regional coordination and collaboration.
  - 5 Community Fairs
  - Tribal nations meeting
  - Many others
- Generated 6,000 recommendations which were ultimately turned into 12 Goals, 37 Strategies, and 159 Actions.



# Countywide Sustainability Plan Topics



- Water
- Energy
- Climate
- Air Quality
- Land Use and Transportation
- Open Space, Recreation and Habitat/Biodiversity
- Resource Recovery and Waste Management
- Public Health and Well-Being
- Economy and Workforce Development
- Housing

**Equity &  
Resilience  
woven  
throughout**

Alignment with LA City  
Green New Deal where  
feasible





# Goals, Strategies, and Actions



## Goals

Broad statement of a desired future state

“A prosperous LA County that provides opportunities for all residents and businesses and supports the transition to clean economy sectors

Promote inclusive growth across the changing economy

## Strategies

More specific statement on the approach to achieve the goal

“Engage in partnerships, such as the Transportation Electrification Partnership, to promote the development of local advanced transportation manufacturing and maintenance.”

## Actions

Detailed statements on the policy or program to fulfill the strategy

# High Level Goals



Resilient and healthy community environments where residents thrive in place



Buildings and infrastructure that support human health and resilience



Equitable and sustainable land use and development without displacement



A prosperous LA County that provides opportunities for all residents and businesses and supports the transition to clean economy sectors



Thriving ecosystems, habitats, and biodiversity



Accessible parks, public lands, and public spaces that create opportunities for respite, recreation, ecological discovery, and cultural activities



# High Level Goals



A fossil fuel-free LA County



A convenient, safe, clean, and affordable transportation system that expands mobility while reducing car dependency



Sustainable production and consumption of resources



A sustainable and just food system that enhances access to affordable, local, and healthy food



Inclusive, transparent, and accountable governance that supports participation in sustainability efforts, especially by disempowered communities



A commitment to realize OurCounty sustainability goals through creative, equitable, and coordinated funding and partnerships

# Goals, Strategies, and Actions



"A convenient, safe, clean, and affordable transportation system that expands mobility while reducing car dependency."

"Reduce vehicle miles traveled by prioritizing alternatives to single occupancy vehicles."

Offer free transit passes for students, youth, seniors, disabled, and low-income populations

"A convenient, safe, clean, and affordable transportation system that expands mobility while reducing car dependency."

"Reduce vehicle miles traveled by prioritizing alternatives to single occupancy vehicles."

"Install bus-only lanes and signal prioritization along major thoroughfares, and work with transit agencies and neighboring jurisdictions to plan and install full bus rapid transit infrastructure along priority corridors, as appropriate."



# Targets

- Targets are set **countywide** as well as for unincorporated areas and/or County facilities and operations as appropriate.

Strategy 3B	Targets
Implement transit-oriented development	<p><b>Countywide:</b></p> <p><b>2025</b></p> <ul style="list-style-type: none"><li>• At least 50% of all new housing built within ½ mile of high-frequency transit</li></ul> <p><b>2035</b></p> <ul style="list-style-type: none"><li>• At least 65% of all new housing built within ½ mile of high-frequency transit</li></ul> <p><b>2045</b></p> <ul style="list-style-type: none"><li>• At least 75% of all new housing built within ½ mile of high-frequency transit</li></ul>

# Targets

- Targets are set **countywide** as well as for unincorporated areas and/or County facilities and operations as appropriate.

Strategy 8A	Targets
Reduce vehicle miles traveled by prioritizing alternatives to single occupancy vehicles.	<b>Countywide:</b> <b>2025</b> <ul style="list-style-type: none"><li>• At least 15% all trips by foot, bike, micromobility, or public transit</li><li>• Reduce average daily VMT per capita to 20 miles</li></ul> <b>2035</b> <ul style="list-style-type: none"><li>• At least 30% all trips by foot, bike, micromobility, or public transit</li><li>• Reduce average daily VMT per capita to 15 miles</li></ul> <b>2045</b> <ul style="list-style-type: none"><li>• At least 50% all trips by foot, bike, micromobility, or public transit</li><li>• Reduce average daily VMT per capita to 10 miles</li></ul>



# Board of Supervisors Adoption

- The Discussion Draft Plan generated 800 specific public comments.
- Final Plan presented to Board of Supervisors on August 6, 2019 and adopted unanimously following over 70 public commenters.
- Board motion provided specific direction on:
  - Creating a new Board Directed Priority on Sustainability (1 of 7 board priorities)
  - Aligning County legislative advocacy
  - Process for prioritizing and funding actions
  - Annual reporting on implementation
  - 5-Year update cycle



# What's in the plan?

# Media

LOS ANGELES LOS ANGELES ENVIRONMENT

## An LA without gas stations?

*A county sustainability plan is the latest framework for a carbon-free LA*

By **Elijah Chiland** | Aug 5, 2019, 9:19pm PDT

f t SHARE



The county's plan calls on more people to walk, bike, or take public transit. | Shutterstock

Oil derricks and refineries would disappear from the region.

Gas stations would become irrelevant.

Streetscapes would be dominated by electric vehicles, cyclists, and pedestrians.



PODCAST



5 MIN



GREATER LA

## LA County adopts bold sustainability plan

Hosted by Steve Chiotakis • Aug. 07, 2019 LOS ANGELES

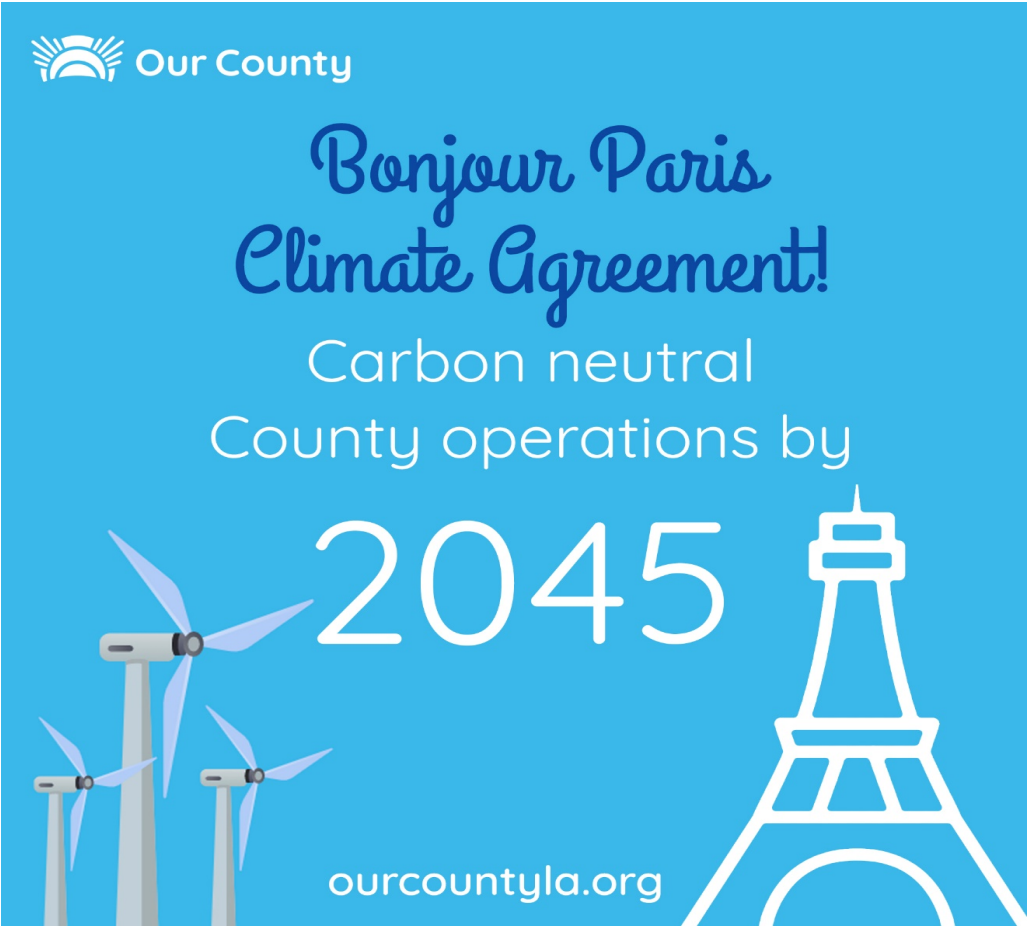


Part of LA County's new sustainability plan includes making parks more accessible.

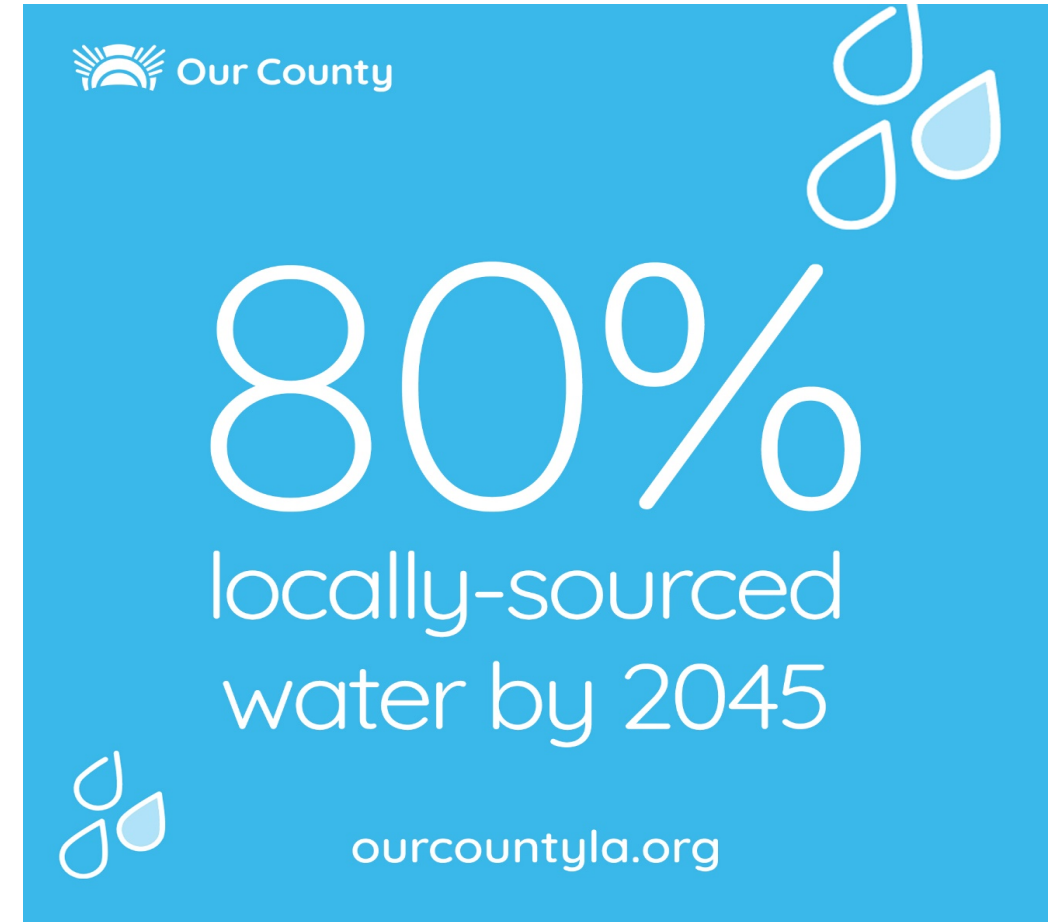
*Photo credit: Christi Nielsen (CC BY-NC-ND 2.0)*

The LA County Board of Supervisors approved a new [sustainability plan](#) this week, affecting the 88 individual cities and the 10 million people living in the county. The plan includes 12 ambitious goals, including making parks and public lands more accessible, going fossil fuel-free in 25 years, and diverting nearly all of the county's waste from landfills.





# Photovoice





**[OurCountyLA.org](https://www.OurCountyLA.org)**



# Panel Discussion





# Audience Questions





